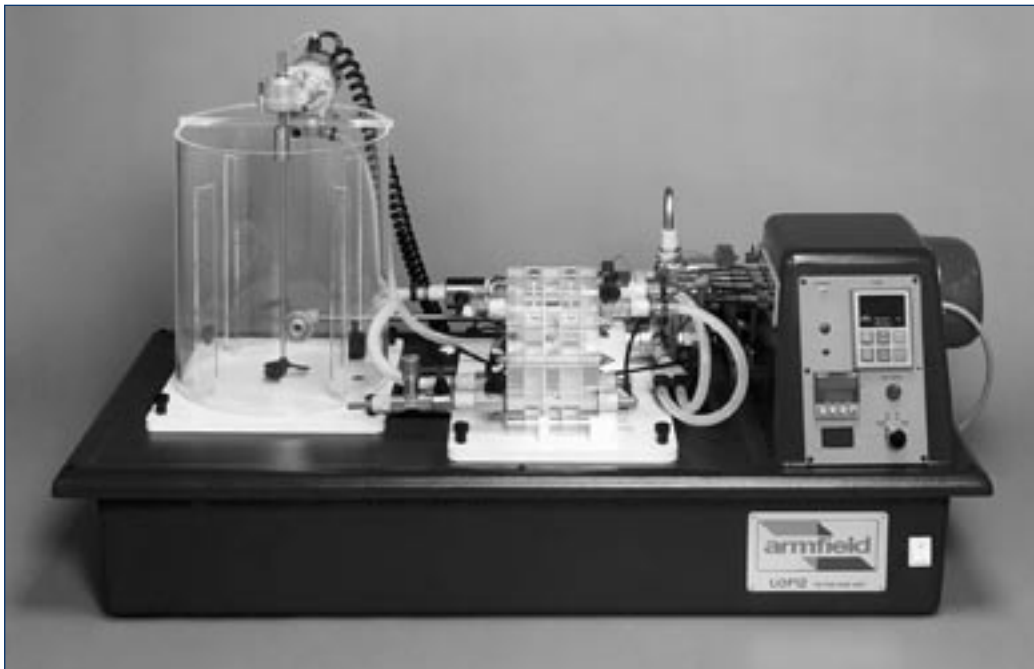




armfield

FILTRATION UNIT

UOP12
issue 2

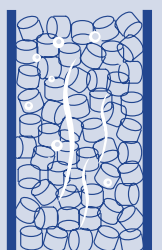


UOP12 with plate and frame filter unit

Filtration is an extremely important unit operation being used by industries such as chemical, food and water treatment.

The Armfield filtration unit demonstrates the principles of batch filtration using a fully functional plate and frame filter system. A continuous, tangential flow microfiltration unit using a hollow fibre filtration cartridge (a membrane technology application) is available as an option. Both types of filter are widely used in the commercial world.

The practical training exercises are appropriate to chemical and all other process related engineering courses, including technician training. An economic investigation allows the student to take experimental data and to use it to help make decisions on the size and the operation of a filtration plant in order to meet economic and output targets.



BATCH FILTRATION WITH THE PLATE AND FRAME FILTER

INSTRUCTIONAL CAPABILITIES

- Demonstrating filtration through membrane technology
- Understanding the principles of batch filtration using both constant pressure and constant flow operating modes
- Mass balancing
- Precoat and body aid filtration
- Determining important criteria for scale-up
- Commercial aspects of filtration

KEY FEATURES

- The plate and frame filter unit uses nylon as the filter medium. The unit is constructed in clear acrylic which enables the entire filtration process to be observed: the feed slurry in the feed channels, the build up of filtered solids in the frame plates, and the clarified filtrate in the filtrate channels.
The filter unit uses gaskets to prevent leakage and enable operation up to 2 barg.
Bleed valves in the top of the frame plates enable trapped air to be removed for efficient filtration.
- An optical absorbance sensor is provided for on-line and off-line monitoring of the filtration process. It is also used to monitor the efficiency of filter cake washing operations.
- A controller enables constant pressure operation by controlling the speed of the feed pump.
- The progressing cavity feed pump enables constant feed rate operation.
- All electrical sensors: pressure, optical absorbance, temperature and the feed pump flow rate can be logged using a PC (optional teaching software available).
- Water and calcium carbonate are the recommended working materials for reasons of safety and ease of use.

DETAILED CAPABILITIES

Teaching exercises are included to familiarise students with the following topics:

- Demonstration of precoat filtration
- Optimisation of filtration performance using body aid
- Demonstration of Darcy's Law
- Determination of medium and cake resistances
- Effect of body aid on medium and cake resistances
- Filter cake washing and dewatering
- Economic optimisation of filtration operations

DESCRIPTION

UOP12 is a bench top unit designed to introduce students to the fundamentals of solid/liquid filtration. The apparatus consists of an acrylic feed tank connecting to a progressing cavity pump which feeds a slurry to the acrylic plate and frame filter press. A pressure sensor on the output of the pump measures the filtration pressure. The filter press consists of 2 end plates, 2 frame plates and a wash plate. The filtrate passes through an optical sensor which determines the efficiency of the filtration process. Filtrate temperature is also measured. The second inlet to the filter is for mains water for filter cake washing. A second pressure sensor and a needle valve control the water pressure during the washing cycle. A 3-way valve allows filtrate to be returned to the feed tank or to a filtrate vessel/drain.

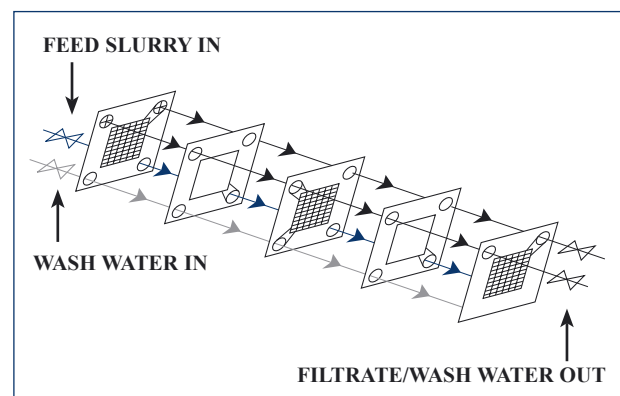


Diagram of flow path through the plate and frame filter.

CONTINUOUS FILTRATION WITH THE TANGENTIAL FLOW HOLLOW FIBRE FILTER CARTRIDGE - UOP12-10

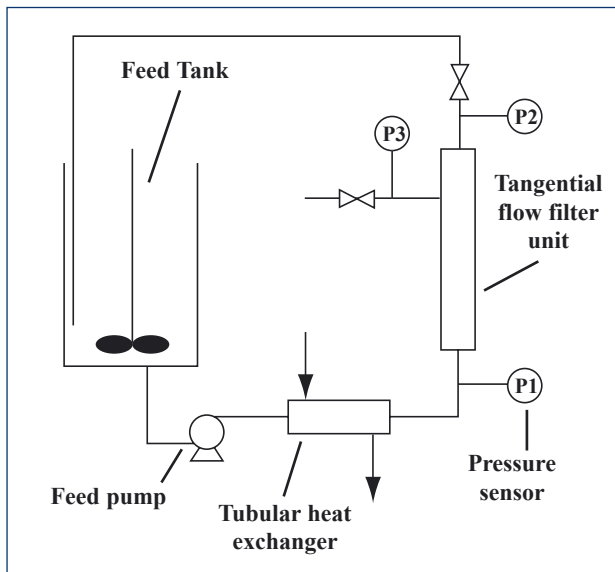


Diagram of process schematic for tangential flow filtration

INSTRUCTIONAL CAPABILITIES

- *Demonstrating filtration through membrane technology*
- *Understanding the principles of continuous microfiltration*
- *Examination of flux and transmission of a protein marker*
- *Measurement of fouling and the effect on filtration performance*

KEY FEATURES

- *The tangential flow filtration system uses a hollow fibre filter cartridge. This consists of a cartridge containing a number of polysulfone hollow fibres. These fibres have a pore size of 0.2µm through which the protein marker can pass. The fibres are retained within a transparent plastic shell through which they and the permeate may be observed.*
- *Yeast and a marker protein are used to simulate a biotechnology recovery process.*
- *The optical absorbance sensor is used off-line in order to determine the degree of protein transmission across the membrane.*

- *All electrical sensors: pressure, optical absorbance, temperature and the feed pump flow rate can be logged using a PC (optional teaching software available).*

DETAILED CAPABILITIES

Teaching exercises are included to enable the students to become familiar with the following topics

- *Determination of clean and dirty membrane resistances*
- *Determination of the transcartridge pressure drop*
- *Mass balancing of protein filtration*
- *Effect of transmembrane pressure on membrane flux and protein transmission*
- *Effect of tangential flow velocity on membrane flux and protein transmission*

DESCRIPTION

The tangential flow filter is available as an option. It is fitted in minutes simply by removing the plate and frame filter and fitting the hollow fibre cartridge and tubular heat exchanger.

The feed suspension is pumped from the feed tank through the tubular heat exchanger and then through a pre-filter before passing into the hollow fibre filter cartridge. The heat exchanger uses mains water to remove heat originating from the feed pump. Material which does not filter through the membranes of the hollow fibres, called the retentate, remains in the lumen and then exits the filter and is returned to the feed tank. Material that does pass through the membranes, the permeate, is collected in the permeate vessel. Pressure is measured by sensors at the entrance and exit of the hollow fibre filter cartridge on the retentate side and also at the permeate exit from the cartridge. Temperature is measured on the retentate side of the filter cartridge. The optical sensor is used to measure protein concentration of the permeate stream.

ORDERING SPECIFICATION

- **A bench top unit comprising a vacuum formed ABS plastic plinth with integral electrical console on to which is mounted the filtration system.**
- **A plate and frame batch filter (separation area 230 cm²) is supplied as standard. Both constant flow rate and constant pressure operation are possible.**
- **An optional tangential flow hollow fibre microfiltration cartridge (plus pre-filter and shell and tube heat exchanger) can be fitted. The hollow fibre cartridge has a separation area of 110 cm² and a cut-off of 0.2 µm.**
- **Feed flow rate can be varied between 0 and 130 litres/hour.**
- **All electrical circuits are protected by appropriate protection devices.**
- **The console contains a pump motor control and display panel.**
- **A separate controller displays the filter inlet pressure and is used to control the pump speed. Another digital meter displays, via a selector switch, either outlet pressure, permeate pressure, temperature or optical absorbance. Sensor signals are also routed to an I/O port for connection to a PC.**
- **An optional interface device and educational software package is available.**
- **A comprehensive instruction manual is included with a range of fully detailed laboratory teaching exercises.**

OPTIONAL ACCESSORIES

UOP12-10 - Tangential flow filter accessory

UOP12-304IFD - Educational Software and data logging accessory (requires a Windows 98 or Windows 2000 computer with a USB port).

SERVICES REQUIRED

Single phase mains electrical supply:
UOP12-A: 220/240V/1ph/50 Hz @ 10A
UOP12-B: 120V/1ph/60Hz @ 15A
UOP12-G: 220V/1ph/60Hz @ 10A

Plate and frame filter: optional mains water supply 3 litres/min @ 2 bar, optional pressurised air supply @ 2 bar.

Tangential flow filter option: mains water supply 3 litres/min @ 2 bar.

OVERALL DIMENSIONS

Plate and frame filter:

Height: 600mm
Width: 1.1m
Depth: 500mm

Tangential flow filter:

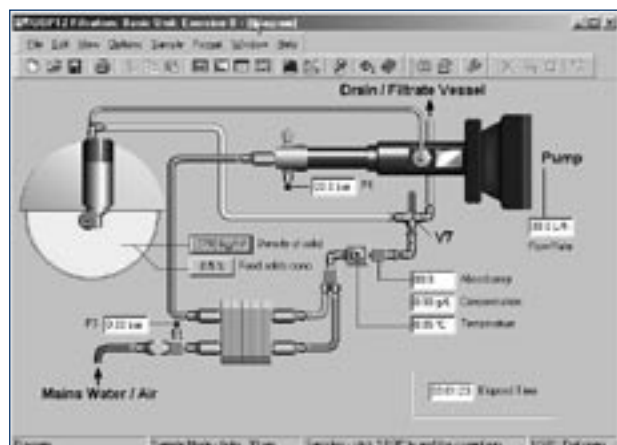
Height: 750mm
Width: 1.1m
Depth: 500mm

SHIPPING SPECIFICATION

Volume: 0.50m³
Gross Weight: 50kg

Armfield Limited
Bridge House, West Street, Ringwood,
Hampshire BH24 1DY, England
Tel: +44 (0)1425 478781 Fax: +44 (0)1425 470916
E mail: sales@armfield.co.uk
URL: <http://www.armfield.co.uk>

USA Office:
Armfield Inc.
436 West Commodore Blvd (#2)
Jackson NJ 08527
Tel: (732) 928-3332 Fax: (732) 928-3542
E mail: info@armfieldinc.com



Example of educational software (UOP12-304IFD)